



# the River Restoration Centre

*Working to restore and enhance our rivers*

Delivering River Restoration: Recipes for Success

## 13<sup>TH</sup> ANNUAL NETWORK CONFERENCE



Restoring Europe's Rivers



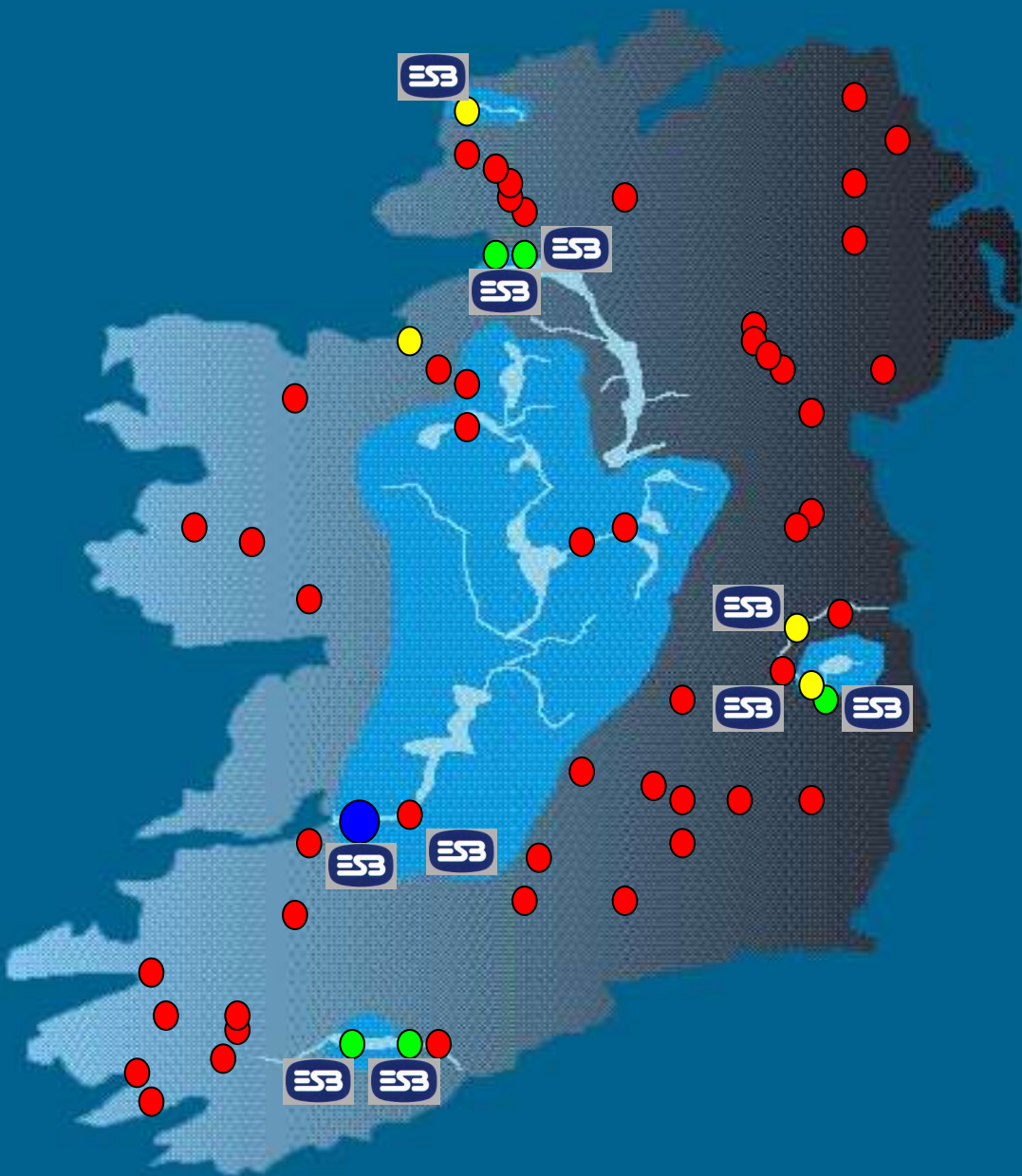
ARUP



The background of the slide is a scenic photograph of a river, likely the River Shannon, flowing through a lush green landscape. The river is in the foreground, and the background shows rolling hills and a bright, hazy sky. The text is overlaid on this image.

# **The Electricity Supply Board and Habitat Development in the R. Shannon catchment, Ireland.**

**Dr. Dennis Doherty and Tom Clancy (ESB Fisheries Conservation)  
and Lorraine O'Donnell (Inland Fisheries Ireland)**



<100MW Hydro station



<25MW Hydro station



<4MW Hydro station



<1MW Hydro station

- ESB Fisheries catchments:  
Shannon  
Liffey  
Erne  
Clady / Crolla  
Lee



# Shannon Hydro-electric Scheme – 1935 Fisheries Act

“manage, maintain, preserve & conduct”

Similar requirements in subsequent hydro schemes

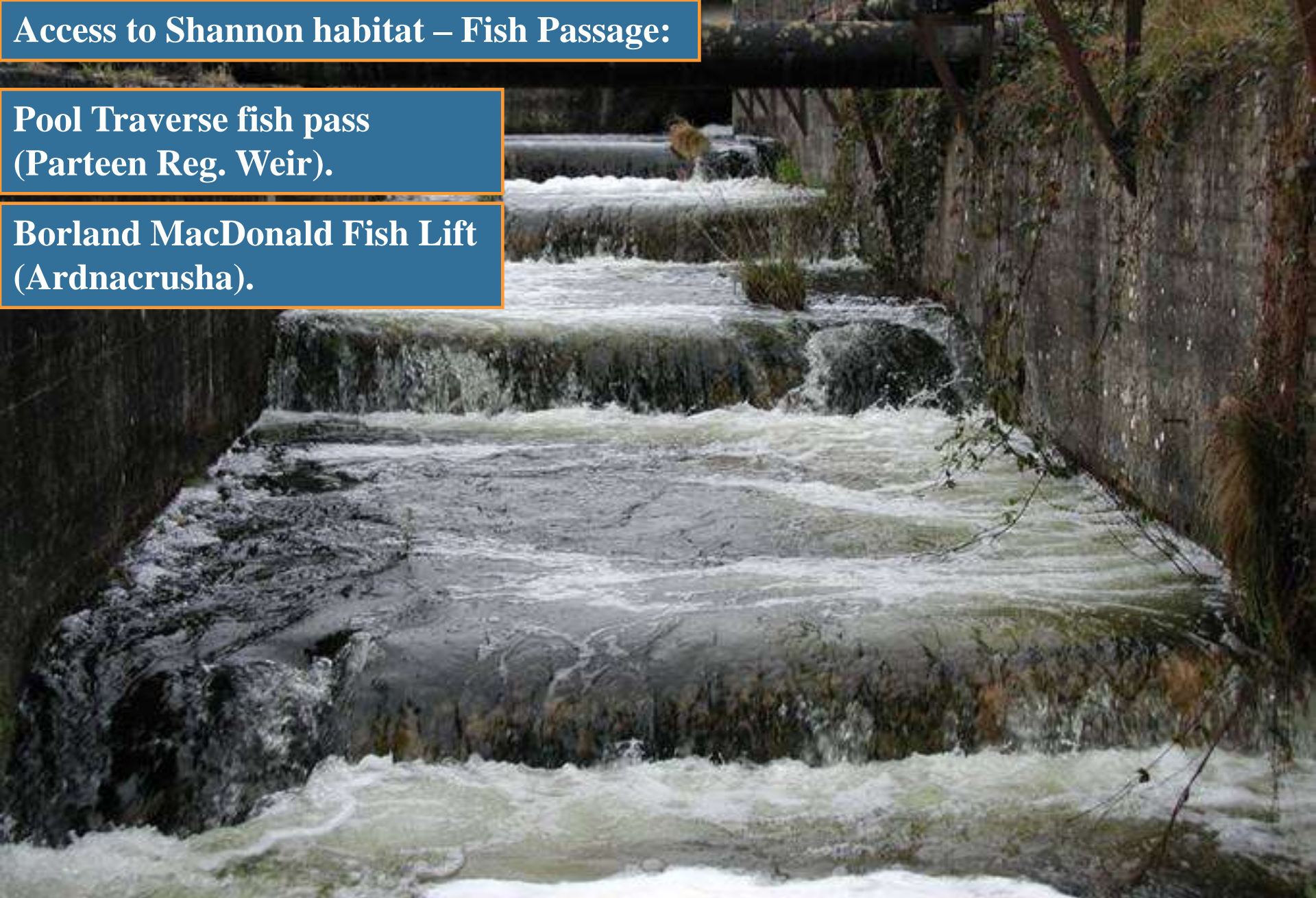




# **Access to Shannon habitat – Fish Passage:**

**Pool Traverse fish pass  
(Parteen Reg. Weir).**

**Borland MacDonald Fish Lift  
(Ardnacrusha).**





Borland McDonald Fish lift



## Factors affecting Shannon fisheries habitat:

**Fish passage:** Both at ESB locations but also many weirs/fish passes associated with other smaller hydro schemes and mills.

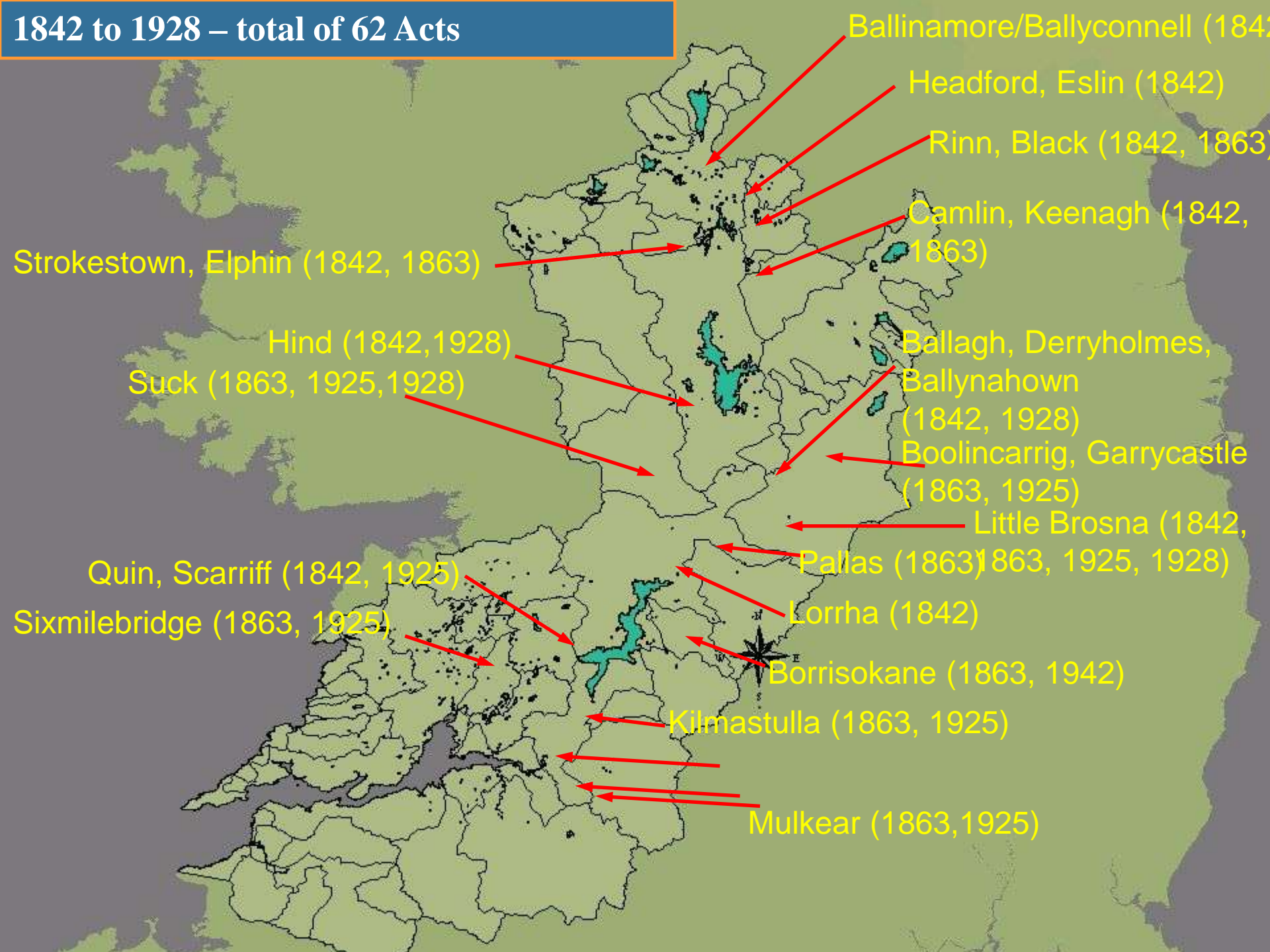
**Arterial Drainage Schemes and Local Drainage Boards** – since the 1800's to present. Maintenance programs since then.

**Water quality degradation** – impact of agriculture, forestry, peat extraction, industrial and domestic effluent.

**Fish species introductions** e.g. Roach, Dace, Chub (*Inny*),

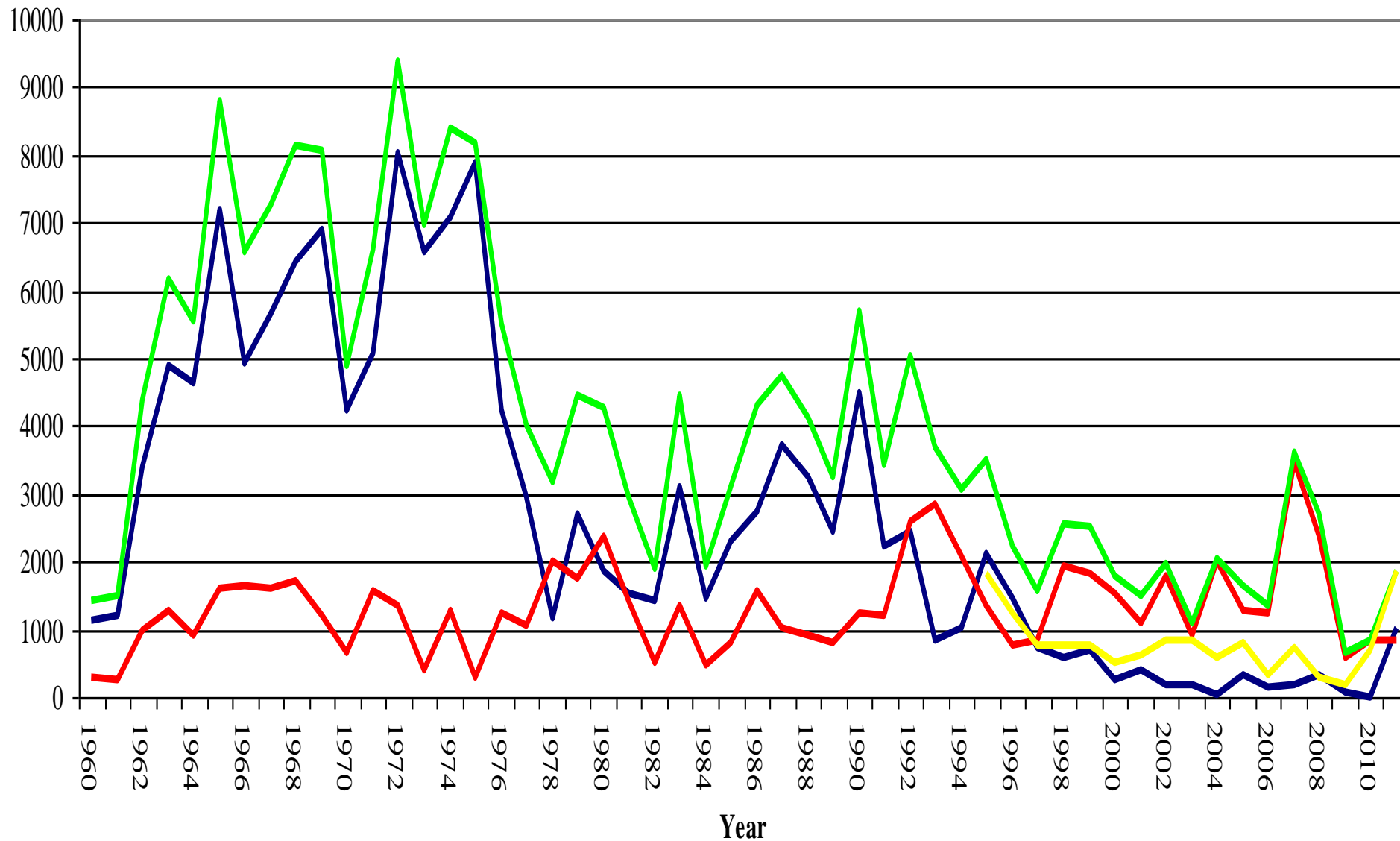


1842 to 1928 – total of 62 Acts





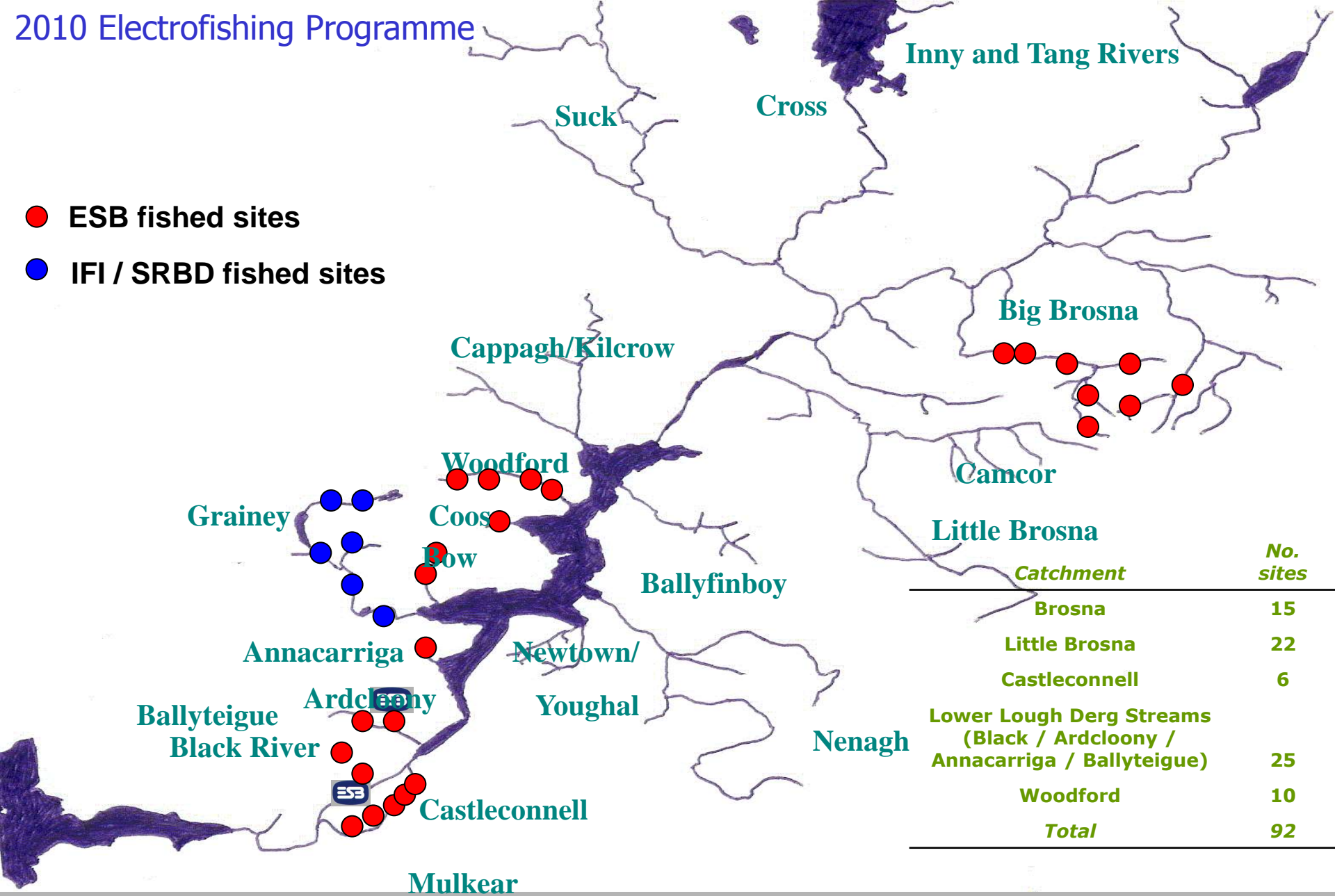
No. of salmon



— Ardnacrusha — Parteen — Total — Wild

# 2010 Electrofishing Programme

- ESB fished sites
- IFI / SRBD fished sites





**Shannon Fisheries Partnership:**

**Electricity Supply Board**

**Inland Fisheries Ireland**

**The Sh. Fish. Dev. Co. (Angling clubs).**



# Habitat rehabilitation - Lower Shannon catchment

